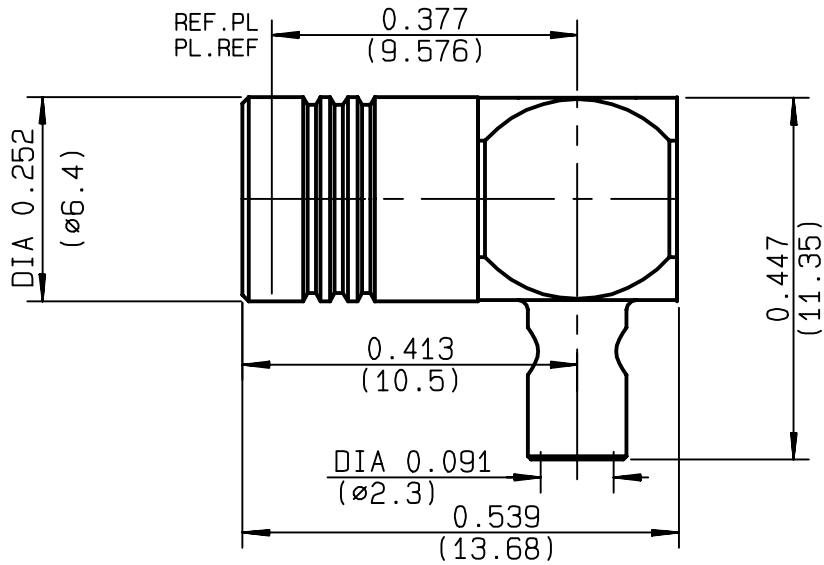


**RIGHT ANGLE PLUG SOLDER TYPE  
CABLE .085**

**R114.152.000**  
**SERIES SMB**



NOMINAL IMPEDANCE	<b>50</b> Ω	CABLES : <b>KS 1</b>
FREQUENCY RANGE	<b>0-4</b> GHz	<b>RG 405</b>
TEMPERATURE RATING	<b>-65/+165</b> °C	
V.S.W.R	<b>** +</b> x F(GHz)Maxi	
RF INSERTION LOSS	<b>0.2</b> √F(GHz) dB Maxi	
VOLTAGE RATING	<b>335</b> Veff Maxi	
DIELECTRIC WITHSTANDING VOLTAGE	<b>1000</b> Veff Mini	
INSULATION RESISTANCE	<b>1000</b> MΩMini	OTHERS CHARACTERISTICS
HERMETIC SEAL	<b>NA</b> Atm.cm <sup>3</sup> /s	<b>** ROS(VSWR)1.06 de 900MHz a 1800MHz</b>
LEAKAGE (pressurized only)	<b>NA</b>	CABLE RETENTION <b>200</b> N Mini
MECHANICAL DURABILITY	<b>500</b> Cycles	CENTER CONTACT RETENTION
WEIGHT	<b>2.92</b> gr	Axial force - mating end <b>10</b> N Mini
SPECIFICATION		Axial force - opposite end <b>10</b> N Mini
		Torque <b>NA</b> cm.N Mini
		RECOMMENDED TORQUES
		Mating <b>NA</b> cm.N
		Panel nut <b>NA</b> cm.N
		Clamp nut <b>NA</b> cm.N

CONNECTOR PARTS	MATERIALS	FINISH	(all values are given in micrometers)
BODY	BRASS	GOLD 0.2 OVER NICKEL 2	
OUTER CONTACT	BERYLLIUM COPPER	GOLD 0.5 OVER NICKEL 2	
CENTER CONTACT	BERYLLIUM COPPER	GOLD 1.3 OVER NICKEL 2	
INSULATOR	PTFE	-	
GASKET	-	-	
OTHERS PIECES	BRASS	GOLD 0.2 OVER NICKEL 2	

ISSUE	CREATION DATE	FILE PART-NUMBER
<b>9943B00</b>	<b>27/01/1997</b>	<b>93-0105-013</b>



PERRIN

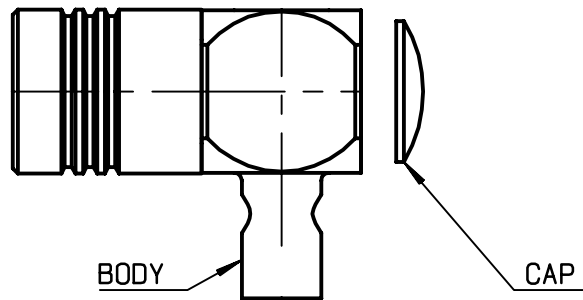
The information given here is subject to change without notice.  
Design changes may be in order to improve the product .

*Connect to the future*



**R114.152.000**

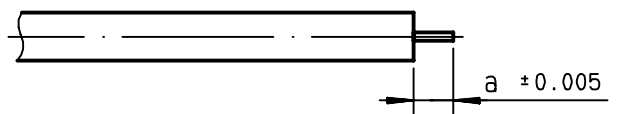
ISSUE **9943B00** SERIES **SMB**



We recommend a thermal preconditioning cable .

①

Strip the cable .  
Stripping tool R282 051 .  
Positioner R282 063 .

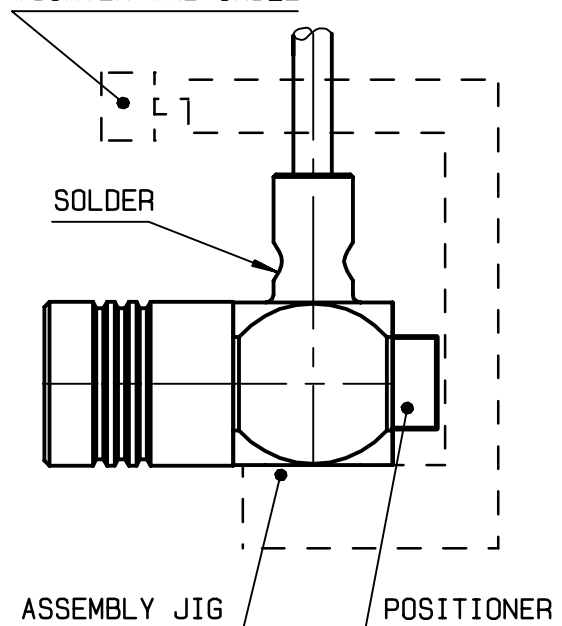


Stripping	a	b	c	d	e
inch	0.091 0	0	0	0	0
mm	2.3				

②

Mount the cable into the body .  
Mount the positioner : R282 744 210  
Place the sub-assembly into the  
assembly jig :R282 740 (or equivalent).  
Solder body onto the cable .  
Let the assembly cool down before  
removing it from the jig .

TIGHTEN THE CABLE



③

Solder the center contact .  
Press on the cap .

